



Actuator Replacement Kit

Models: B10, SpeedGleam Rider Burnisher



This kit contains the necessary part to replace a defective burnishing head lift actuator.

IMPORTANT: For proper actuator operation, carefully follow installation instructions as described below.

Kit Contents

Part No.	Description	Qty.
1200923	Actuator, 24VDC	1



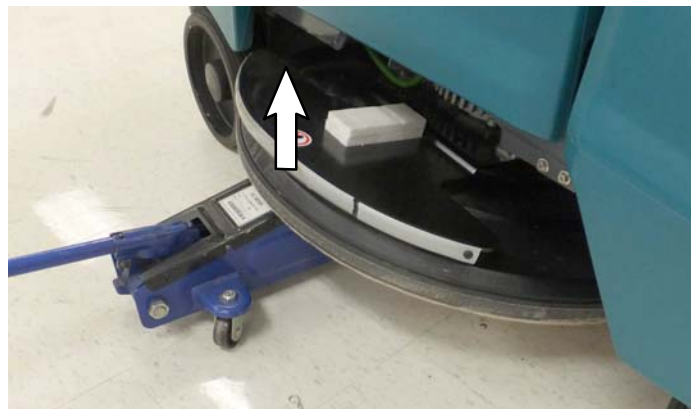
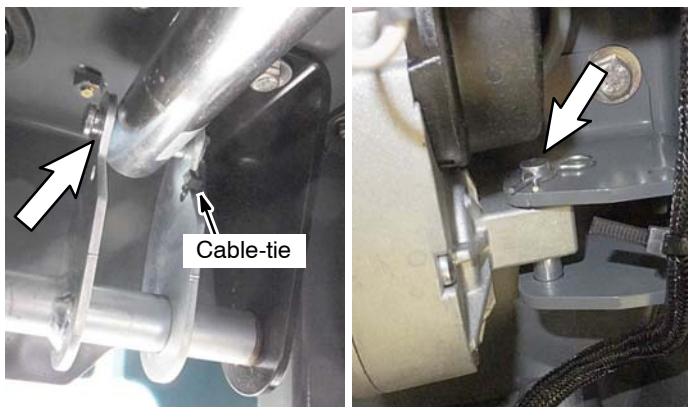
INSTALLATION INSTRUCTIONS:

Installation Time: 1 Hour

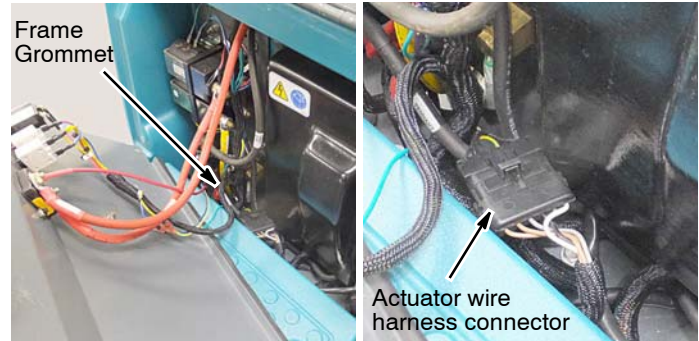
Tools Required: 9/16 in wrench, Philips screwdriver, cable-tie cutters and floor jack

FOR SAFETY: Before servicing machine, stop on level surface, remove key, and set parking brake.

1. Disconnect battery cables from machine.
2. Remove cotter and clevis pins from defective actuator. Cut cable-tie securing tube-end cotter pin. To remove clevis pins, slowly lift the burnishing head with a floor jack until tension on pins is released.

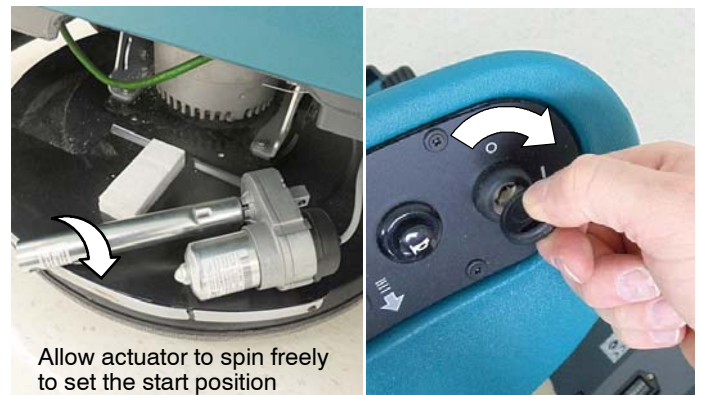


3. Remove five screws from electrical panel and lower panel to access the actuator wire harness connector. Disconnect actuator from machine harness and push connector through frame grommet. Discard defective actuator.

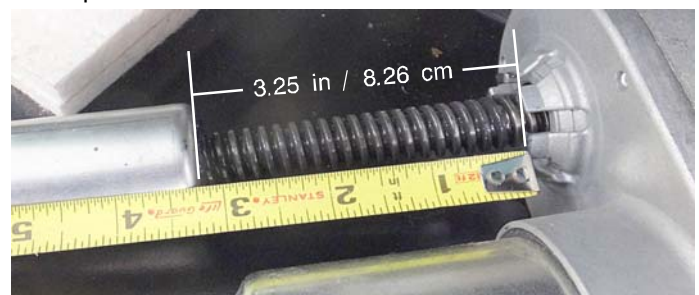


4. Carefully route the wire harness from the new actuator up through frame grommet and plug connector into the machine wire harness. **DO NOT** install actuator at this time.
5. Reconnect battery cables.
6. **IMPORTANT STEP:** The actuator **MUST** be set to the start position for proper operation. Failure to perform this procedure will jam the actuator. *See MANUAL MODE if actuator jams during operation.*

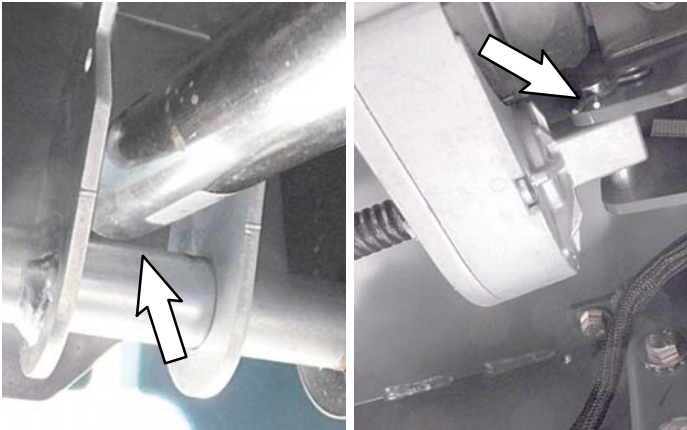
To set the new actuator to the start position, turn key switch on and allow actuator to spin freely until it stops. Turn key switch off and disconnect battery cables from machine.



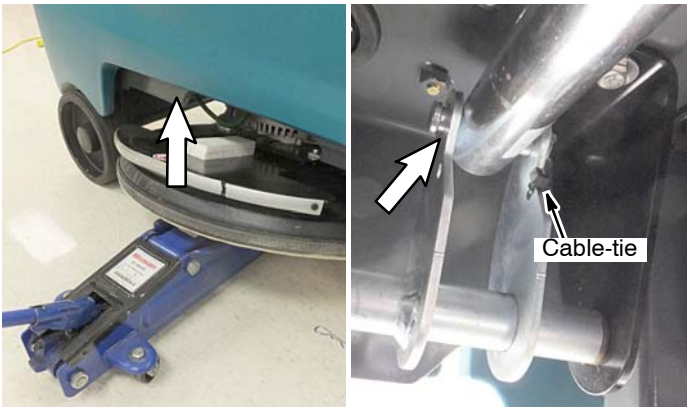
7. After the start position is set, manually turn the actuator tube until 3.25 in (8.26 cm) of thread is exposed as shown.



8. Rest the tube-end of actuator on the mounting bracket as shown, then lift the motor-end of actuator into position. Secure motor-end with clevis pin and cotter pin.



9. Center the floor jack under the burnishing head and slowly raise head until the actuator tube-end holes are aligned with mounting holes. Insert clevis pin and secure with cotter pin. Cable-tie cotter pin in place.



10. Remove floor jack.
11. Reconnect battery cables to machine.
12. Test machine for proper operation.

NOTE: If actuator was not properly set as described in the installation instructions, the burnishing head may jam, tripping a fault code. To unjam the actuator, see **MANUAL MODE**.

MANUAL MODE:

Manual Mode allows service technician to manually operate the lift actuator for testing and service purposes. Follow these instructions to free up a jammed actuator.

1. To enter the manual mode, press and hold the (-) decrease down pressure button while turning key switch on. Release button when the down pressure Economy LED begins to flash.



2. To lower the burnishing head, press the (+) increase down pressure button.
3. To raise the burnishing head, press the (-) decrease button.



4. To exit manual mode, turn key switch off.
5. To prevent actuator from re-jamming, carefully re-install actuator according to the installation instructions.